

State of the Graduate Program in Sustainable Agriculture

Iowa State University
Fall 2009

Welcome

New students:

- Celeste Bell - Plant Path
- Dan Cwach, Sarah Hirsh, Britt Moore, Maria Verburg - Agron
- Jose Gutierrez-Lopez, Rachel Peacher - NREM
- Katie Dirks - CRP
- Victoria LeBeaux - Hort
- Jennifer Vazquez - Soc

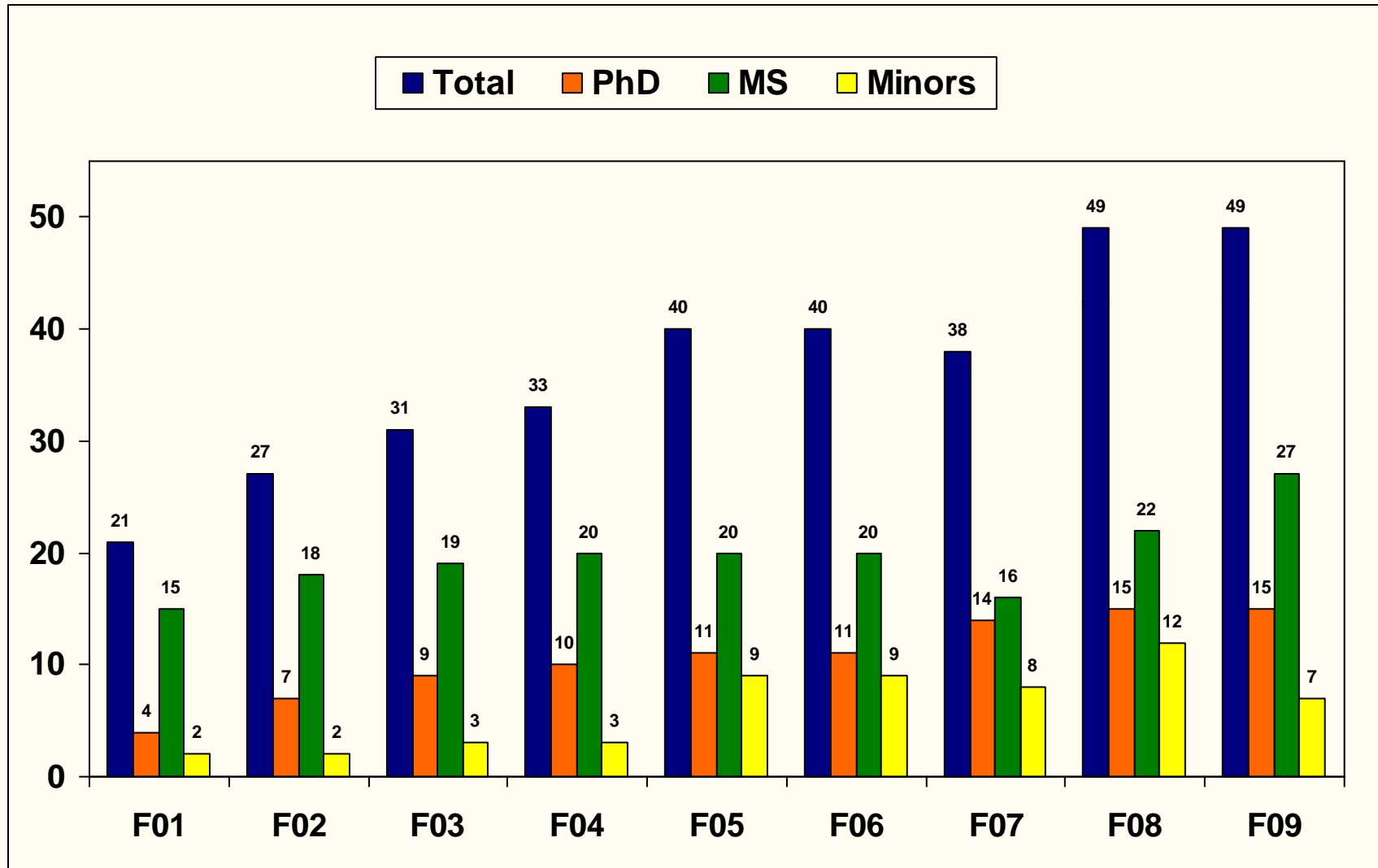
New faculty:

- Tara Clapp - CRP
- Alison Robertson - Plant Path
- Michelle Soupir - ABE
- John Tyndall - NREM
- Lizhi Wang - Industrial & Manufacturing Systems Eng.
- Tom Kaspar - Agron

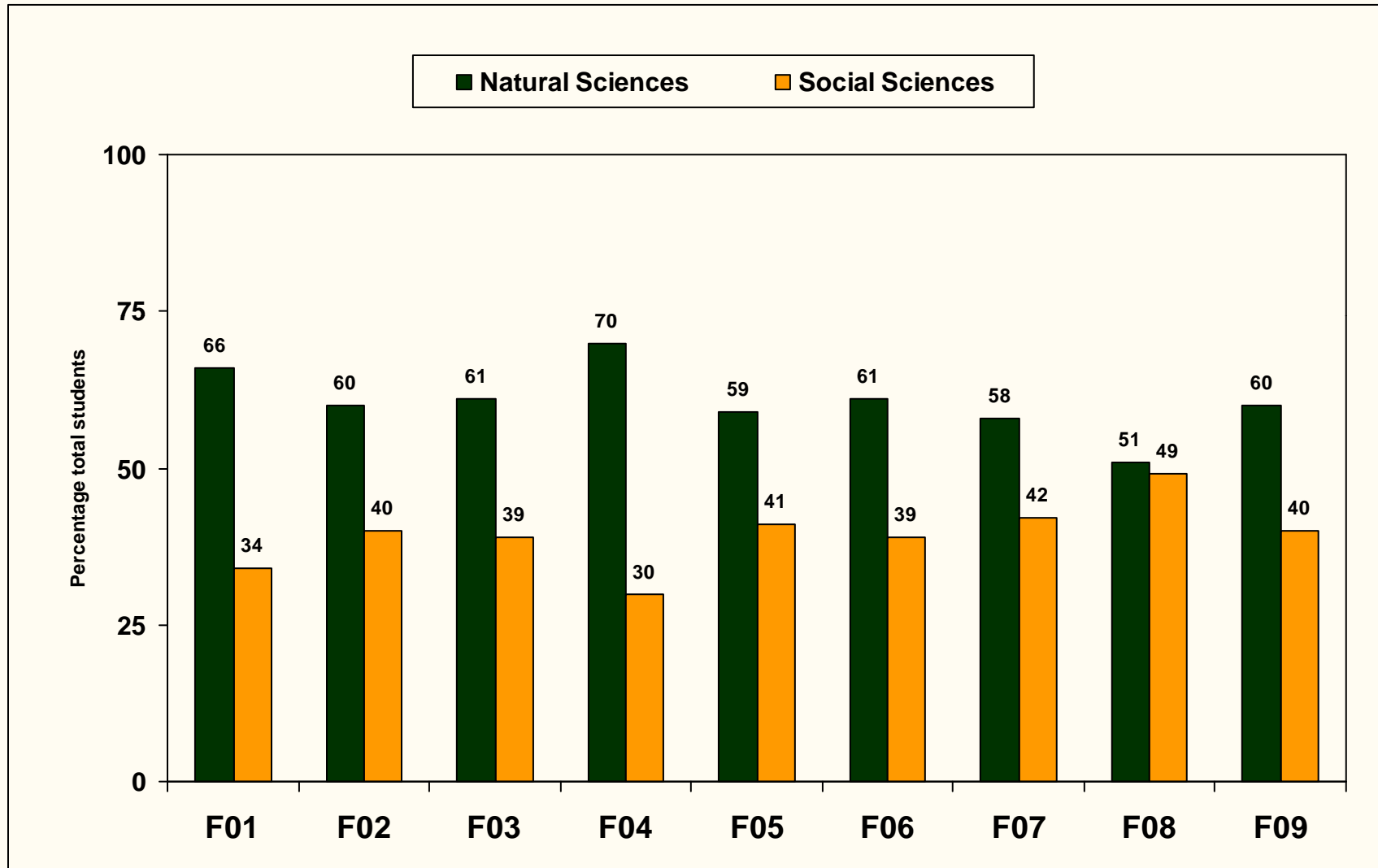
Governance

- Mary Wiedenhoeft, Chair
- Mark Gleason, Vice chair
- DOGE, Mike Duffy has been nominated
- Admissions Comm Chair: Dick Schultz
- Curriculum Comm Chair:
- Coordinating Comm: departmental representation
- *Ad hoc* committee on publicity, outcome from retrospective in Jan.
- Student participation, GPSA Student Association (Meghann Jarchow and Nick Odhe)

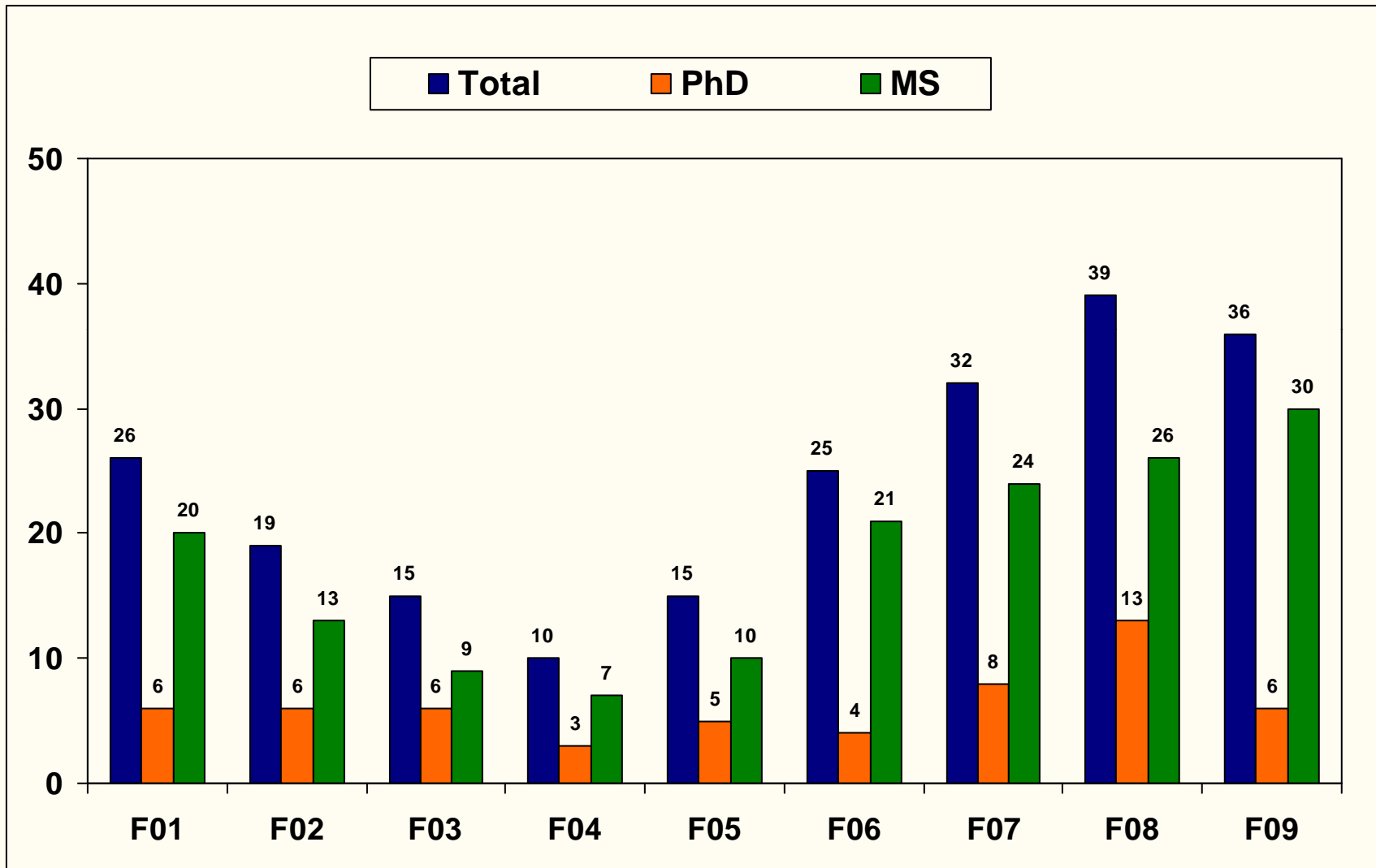
GPSA Enrollment, Fall 2001 – Fall 2009



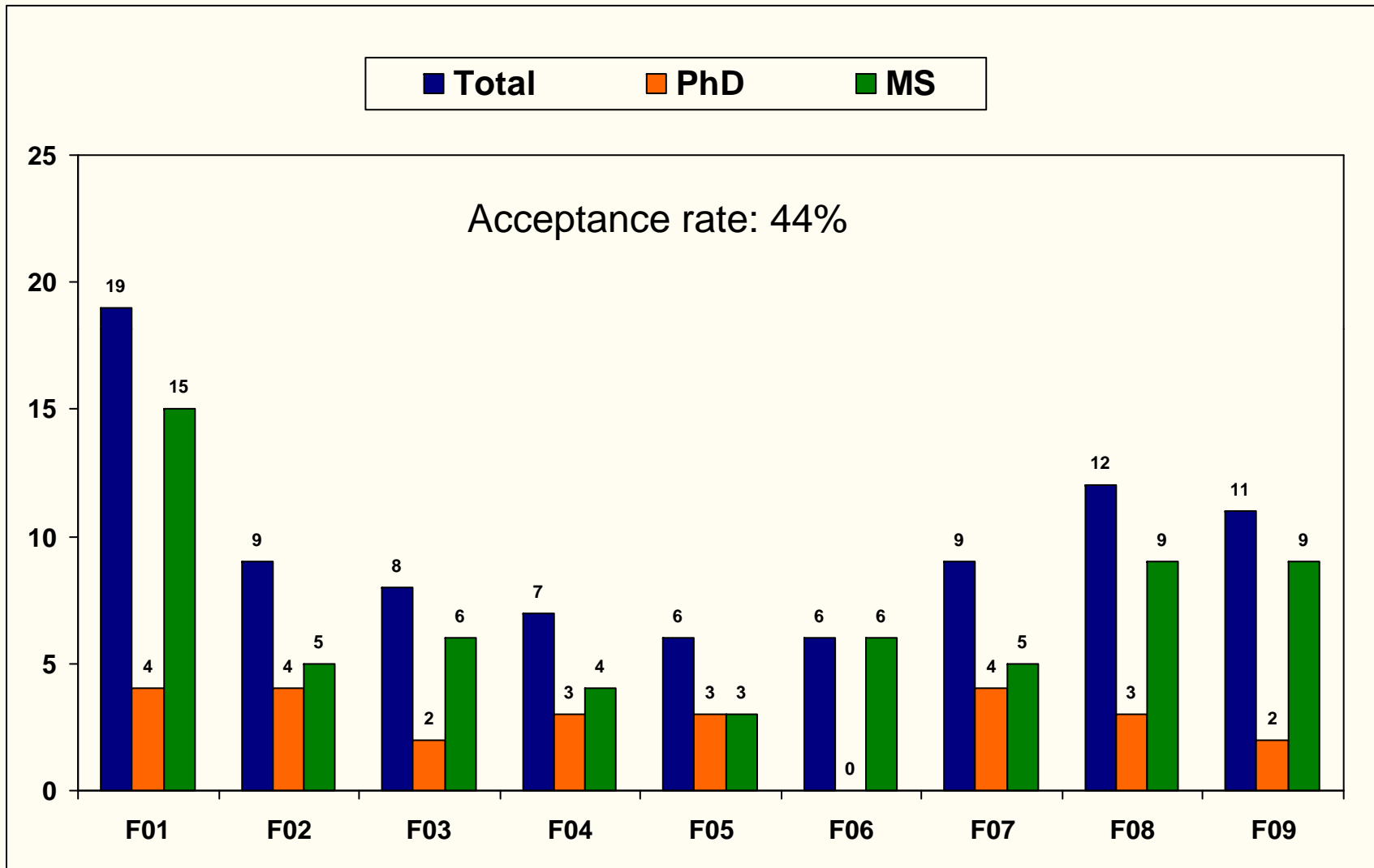
Disciplinary Divisions, Enrolled Students, Fall 01 – Fall 09



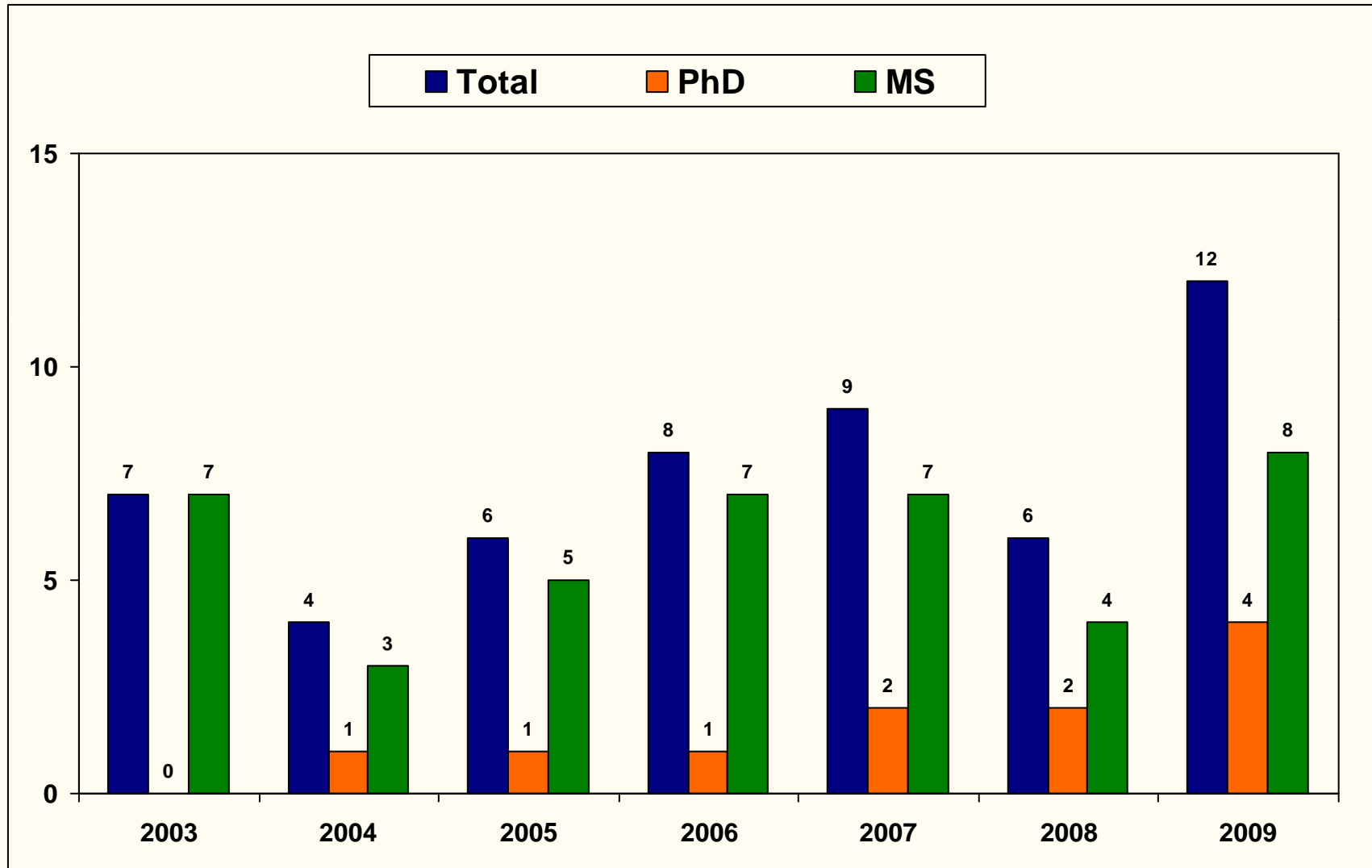
GPSA Applications, Fall 2001 – Fall 2009



GPSA Matriculants, Fall 2001 – Fall 2009

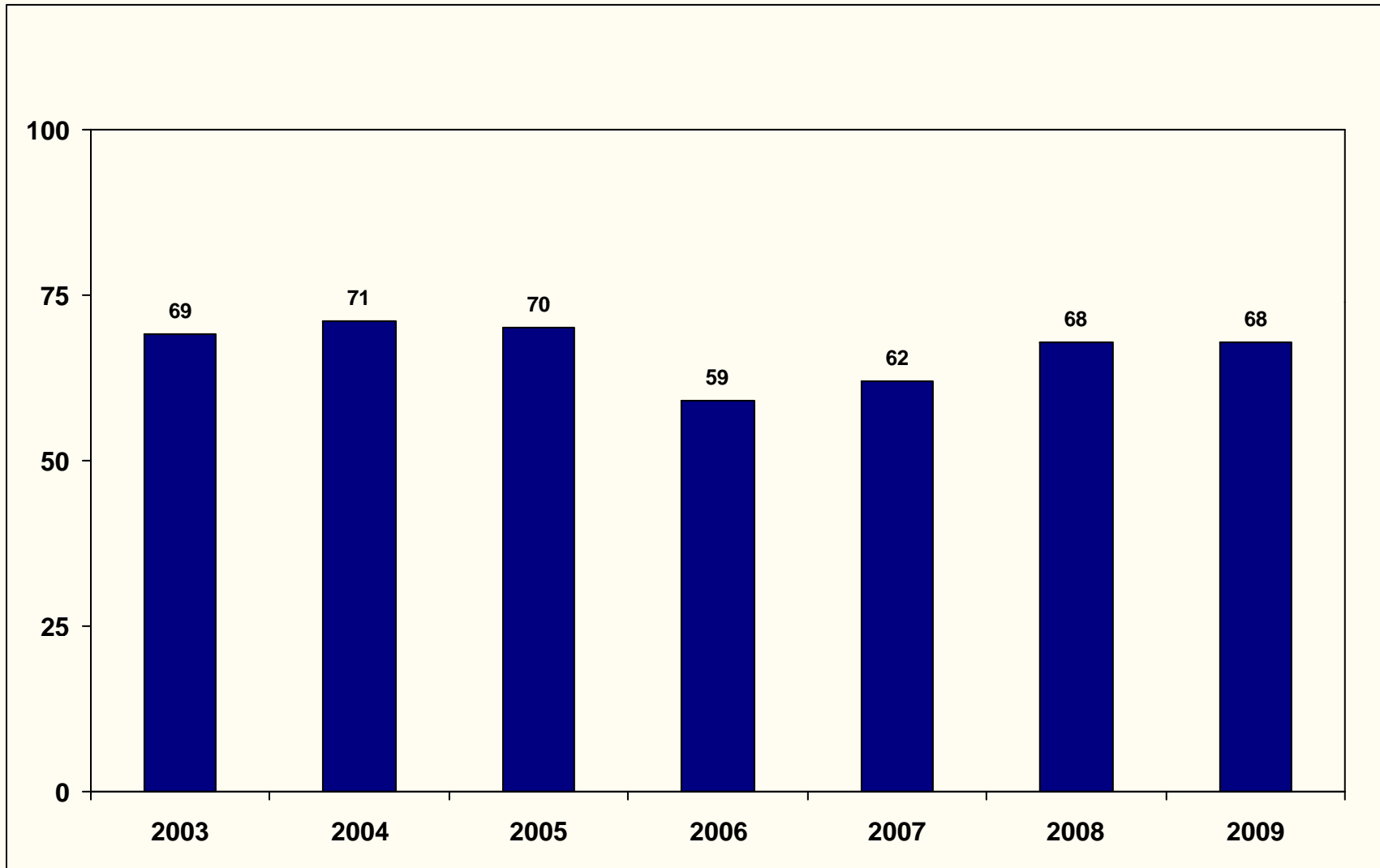


GPSA Graduates: Majors & Co-Majors, 2003 – 2009

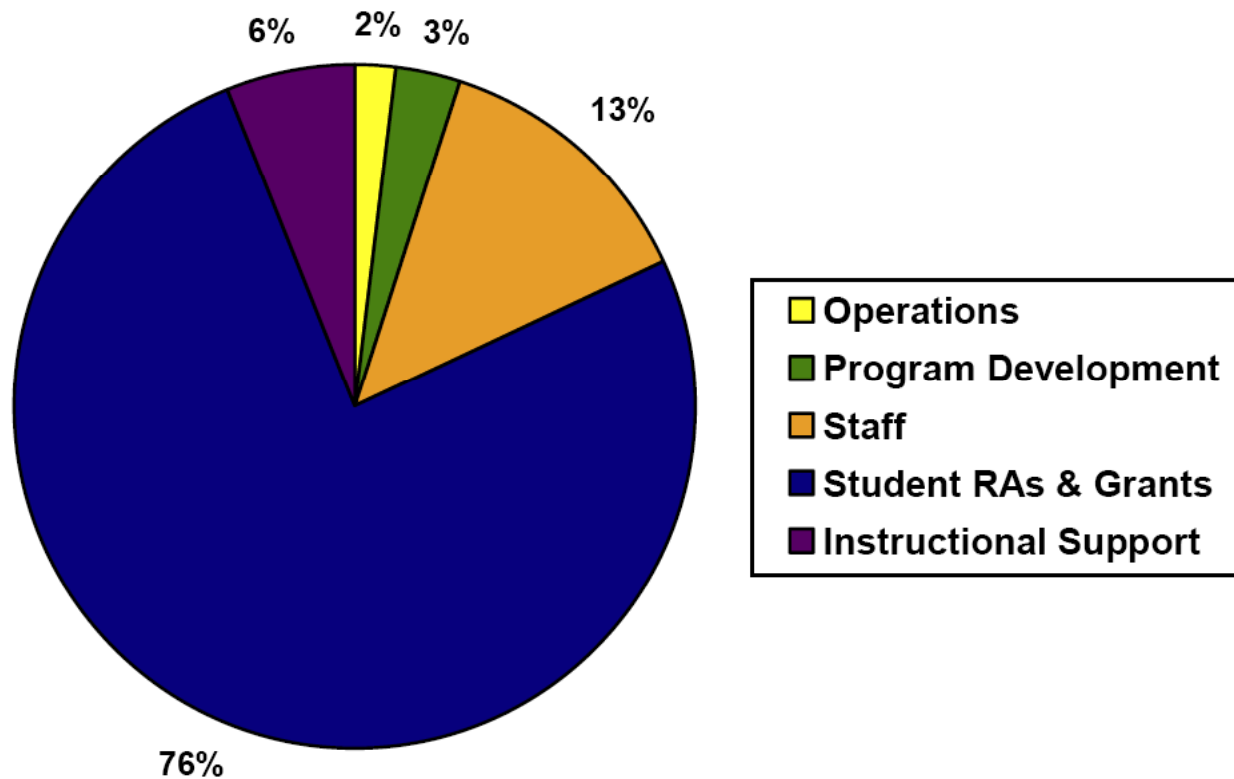


Values for 2009 are based on actual numbers for Spring and Summer terms and projected numbers for Fall term.

Total Faculty Membership – 2003-2009



FY10 Budget



Total: \$141,587

Assistantships: \$101,606/13 students

Professional development for students: \$6000/10 grants

Instructional support: \$9000/SusAg509 and 600

Summer activities

Faculty promotions:

Susana Goggi

Amy Kaleita-Fobes

Matt Helmers

Lisa Schulte-Moore

Clark Wolfe

Mary Wiedenhoeft

Summer graduate:

Haroon Sseguya, PhD, Dr. Mazur, SOC

Hosted the Sustainable Agriculture Education Association 3rd National Conference

Connect ~ Collaborate ~ Create